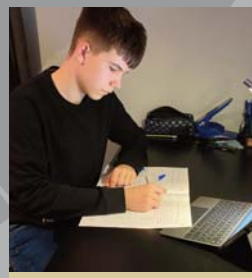


STAYING CONNECTED  
BURY GRAMMAR SCHOOLS

# REMOTE LEARNING



THE BGS JOURNEY CONTINUES WHEREVER YOU ARE



# WELCOME TO REMOTE LEARNING AT BGS

**The BGS journey continues wherever you are.**

Education is about the future. It would be challenging to find a set of circumstances, other than those presented by a global pandemic, in which a positive and resolute focus on the future was more important. Our Remote Learning programme is all about Bury Grammar School's resolve to ensure our pupils' futures are bright ones.

We aim to offer remotely every aspect of a BGS education which would be a normal part of life within school: high quality academic provision; supportive pastoral care; an exciting extracurricular programme; intelligent university options and careers advice; a vibrant Super Curriculum; excellent communication with our parents; support for our community; an environment where friendship is encouraged; and a 'can do' approach.

Every area of school life continues. Time is not standing still at BGS.

Our school is about much more than our buildings: we hope you will see from this brochure that you don't have to be here in person to benefit from a BGS education.

Many thanks must go to our talented pupils, enterprising staff and supportive parents for being behind us and enabling the whole team at Bury Grammar School to create a remote education which gives our pupils every opportunity to progress, grow and thrive.

*"My daughter has really enjoyed the online learning and still feels a full part of the school. It's clear the children at BGS have continued learning at a very high level ensuring their education doesn't suffer."*

BGS Parent

*"I'd just like to drop a quick message of thanks to you and all your staff. The way you have organised the online learning for the children in these incredibly difficult times is nothing short of incredible."*

Year 4 Parent



**Mrs Jo Anderson** - Principal,  
Headmistress of Bury Grammar School Girls



**Mr Devin Cassidy** - Vice Principal,  
Headmaster of Bury Grammar School Boys

*"Once again I'm hugely impressed with Bury Grammar for quickly mobilising a full programme of education – one boy and his two NHS key worker parents are very happy."*

Year 4 Parent

*"Online learning has taught me many different skills, especially learning independently; and whilst I would much rather be in school learning with all my peers, I know that the teachers are able to support me 100% of the time, despite the uncertainty."*

Year 13 student

[WWW.BURYGRAMMAR.COM](http://WWW.BURYGRAMMAR.COM)



# PRIMARY REMOTE PROVISION



**Mrs Chrissy Howard -**  
Primary Principal

**True to BGS school aims, our all-round education continues to be delivered during these unprecedented times to all our pupils.**

Adapting and evolving to new and changing circumstances is part of life, and in the same way that we teach our pupils resilience and strength of character, we have collectively adapted our teaching and learning to ensure continuity for all our pupils.

Our programme of Remote Learning encompasses academic, pastoral and enrichment provision reaching all pupils from 3 to 11. Investment has enabled us to communicate directly with our pupils through Microsoft Teams and whilst this fully supports the delivery of the curriculum, it also allows us to care for our pupils 'face to face'.

Our highly trained primary staff ensure continuity of academic, pastoral and enrichment activities and provision to all our infant and junior pupils.

BGS Key Worker Provision takes care of our critical care community and those who need additional support. This well-planned provision on site enables pupils to access their education with their peers via Teams, supported by experienced familiar staff who know the pupils well.

We are proud to be able to continue the high standards of education during this unusual time. However, we do look forward to welcoming everyone back into School where we belong.

**THANK YOU FOR YOUR  
CONTINUED SUPPORT,  
TOGETHER WE ARE STRONG.**



**Mr Andrew Sheppeck -**  
Deputy Primary Principal,  
Head Junior Boys

# THE VIRTUAL SCHOOL DAY TIMETABLE\*

## INFANTS

|         |   |
|---------|---|
| 8.40am  | Registration, Assemblies and Form Time. |
| 9.05am  | Lesson Time                             |
| 10am    | Snack Time                              |
| 10.20am | Lesson Time                             |
| 11.30am | Lunchtime<br>Enrichment Activities      |
| 12.30pm | Lesson Time                             |
| 1.50pm  | Snack Time and Break Time               |
| 2pm     | Lesson Time                             |

## JUNIORS

|         |   |
|---------|---|
| 8.40am  | Registration, Assemblies and Form Time. |
| 9.05am  | Lesson Time                             |
| 10am    | Break Time                              |
| 10.20am | Lesson Time                             |
| 12.20pm | Lunchtime<br>Enrichment Activities      |
| 1.20pm  | Afternoon Lessons begin                 |
| 3.30pm  | Enrichment Activities                   |

## SENIORS

|                   |   |
|-------------------|---|
| 8.45am - 9.00am   | Registration, Assemblies and Form Time. |
| 9.05am - 9.55am   | Period 1                                |
| 9.55am - 10.45am  | Period 2                                |
| 10.45am - 11.10am | Break time                              |
| 11.10am - 12.00pm | Period 3                                |
| 12.00pm - 12.50pm | Period 4                                |
| 12.50pm - 2.00pm  | Lunchtime<br>Enrichment Activities      |
| 14.00pm - 2.50pm  | Period 5                                |
| 14.50pm - 3.45pm  | Period 6                                |
| 15.45pm           | Enrichment Activities                   |

*"There has been strong school leadership and communication during the pandemic."*

BGS Parent

\*Timetable may be subject to change.

# TEACHING REMOTELY...

- Teachers plan to teach ALL of the content we would usually teach, plus more where possible
- Each lesson contains a variety of approaches: teacher presentations, pupil presentations, teacher-pupil interaction, pupil-pupil interaction, use of video, independent work, on-line collaborative document production/essay writing
- Every lesson begins and ends with pupil-teacher interaction
- Teachers have found ingenious ways to teach all kinds of 'hands on' subjects, such as PE, Art, Music. Nothing has stopped!
- Teachers understand how important encouragement and good relationships are at challenging times and work hard to reinforce these
- We aim to find the right balance between screen time and non-screen time.

**The end result:** we found after lockdown 1 that our pupils were not behind at all. In fact, some were ahead of where they might usually have been.



*We want to say a huge thank you to the teachers and the school for their positivity, professionalism and support throughout this difficult period. We feel that the children have continued to receive an excellent education, and that the teachers have excelled themselves with online lessons.*

BGS Parent



# ...AND LEARNING REMOTELY

Our pupils want to learn and are keen to adopt a regular routine.

- Pupils begin every lesson with encouragement and guidance from teachers and end with clear outcomes.
- All lessons feature plenty of pupil-teacher interaction, aiming to find the right balance between debates, screen time and directed study. Pupils can also complete written work remotely on their devices which teachers can monitor and advise on in real time.
- A variety of activities makes learning excellent: debates, on-line written work, explanations, presentations, videos, role play.
- Pupils are given clear advice about how to learn and study independently.
- Pupils work well with their teachers and also provide much support for each other.
- Learning is both serious and fun - we aim for all lessons to have moments of light!

**The outcome:** many pupils have quickly advanced into being highly developed learners and levels of motivation have been exceptional. BGS pupils progressed successfully into the next stages of their education - whether to Senior School, Sixth Form or university - following the 2020 pandemic.



*"We are so pleased we moved our daughter to BGS and want to say thank you for the constant positivity in your communication with parents. It's refreshing."*

BGS Parent

*"As a new parent at BGS I have been so impressed with the level and standard of teaching via the devices. The patience shown by all of the teachers has been fantastic."*

Year 7 Parent



# DIGITAL INNOVATION

*“The school has been excellent during the lockdown and the support from teachers was first class.”*

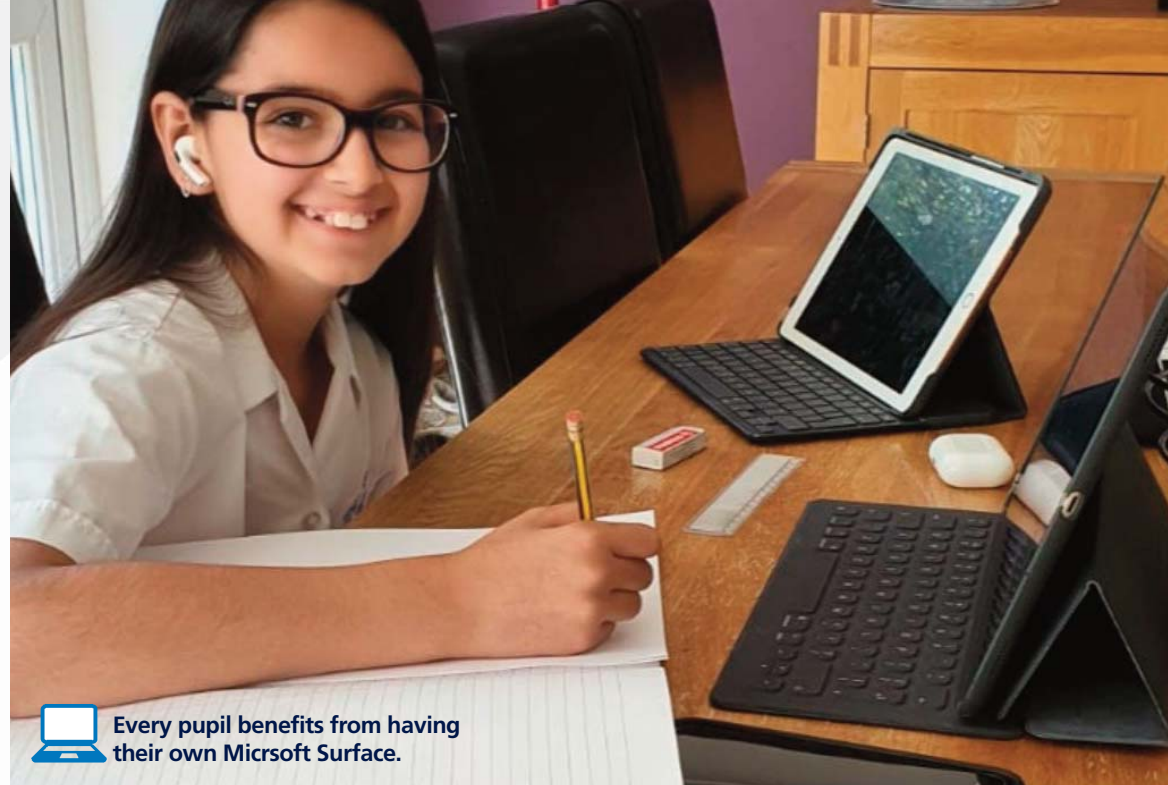
BGS Parent

**At Bury Grammar School our forward thinking approach teamed with our willingness to embrace new technology has confirmed our position as a leading school for digital innovation.**

As a Microsoft school, part of our school aim of scholarship has always been to prepare our pupils for the rapidly changing digital world in which they will study, work and live.

Our move to cloud working through SharePoint and Office 365 teamed with the role of Microsoft Surface Devices for all pupils from Year 1 through to Year 13 has equipped our school community with all of the tools and skills they need to access learning wherever and whenever they need to. This not only ensures that Bury Grammar School pupils are a step ahead when a period of remote learning is required but also enhances their experience during periods of face-to-face education.

Moving from a physical BGS classroom to a virtual one via Microsoft Teams is seamless, secure and happens instantly – we have established excellent academic routines to ensure that teachers, pupils and parents are able to plan ahead and prepare for a full programme of teaching and learning. Our virtual classrooms have enhanced the learning experience for our pupils who follow a full academic timetable remotely, supported by a comprehensive pastoral and extracurricular programme. Whether it is the ‘to-do’ list in Satchel:One, our online homework diary, or the School Cloud online parents’ evening system – our digital platforms ensure our entire school community remains connected.



**Every pupil benefits from having their own Microsoft Surface.**

Looking to the future, hybrid learning will remain a key feature of the BGS academic experience. It ensures that pupils are equipped to complete homework tasks and their own independent study from home as well as giving every pupil access to the same high-quality experience throughout their education whether it is remote or in school.

**Mrs Vicky Leaver** - Assistant Principal,  
Director of Academic Provision

*“Online learning has taught me many different skills, especially learning independently; and whilst I would much rather be in school learning with all my peers, I know that the teachers are able to support me 100% of the time, despite the uncertainty”*

Year 13 student

**All BGS children from Reception to Year 13 will follow their usual daily class timetable during our period of remote learning.**

This allows us to continue to provide the most complete and comprehensive curriculum possible at the very highest level. All subjects continue to be allotted time in the usual manner. For each lesson, children have direct communication with their teacher via our secure Teams network. The same quality of work is set, and the same standards are expected to ensure our pupils continue to make the best possible progress in their learning, despite a change in circumstances.

The provision of devices to all children, has enabled our pupils to have the best possible opportunities, to engage with their online learning, and ensures the quality of our remote provision remains as high as ever.

**Mrs Chrissy Howard** - Primary Principal



*“My daughter has really enjoyed the online learning and still feels a full part of the school. It’s clear the children at BGS have continued learning at a very high level ensuring their education doesn’t suffer.”*

BGS Parent



# ACADEMIC ENRICHMENT

**At BGS we recognise that academic success is hugely important and that a good education encourages subject exploration and learning beyond the curriculum through academic enrichment opportunities to enable students to pursue self-learning in their own areas of interest.**

## SUPER CURRICULUM

At Bury Grammar School we aim to challenge and inspire our pupils to work hard, aim high, achieve their very best and develop their love of learning. Our Super Curriculum is designed to facilitate this by providing students with the opportunity to enhance their learning and develop depth and breadth of knowledge which extends beyond the usual curriculum. The Super Curriculum takes many forms including reading, watching videos online, downloading podcasts, attending lectures, engaging in debates or entering academic competitions, all of which continue during periods of remote learning.



*"The school has been really good with Covid-19"*

BGS Pupil



In addition, the School will continue to enter pupils into local and national competitions online, to allow pupils to showcase their talents, compete against other schools and students, and hopefully taste success!

- **The NCH Essay Competition**
- **The Peter Cane Legal Reasoning Prize Corpus Christi**
- **National Theatre Connections Festival**
- **BBC Composer**
- **ISA Shakespeare Monologue**
- **Vellacott History Prize**
- **RA Butler Politics Prize**
- **UKMT Intermediate Mathematical Challenge**
- **Chemistry Olympiad**
- **Physics Olympiad Senior Physics Challenge**
- **Cyber First Girls.**



## COMPETITIVE UNIVERSITY COURSES

“Students preparing for competitive university courses in Medicine, Dentistry and Veterinary Medicine continue to be supported by weekly tutorials in a programme led by the Headmaster. Lively interactive discussions are planned, covering aspects such as motivation, ethics, the Four Pillars of medicine and personal statement preparation. The Headmistress prepares pupils for competitive Arts and language based courses.”

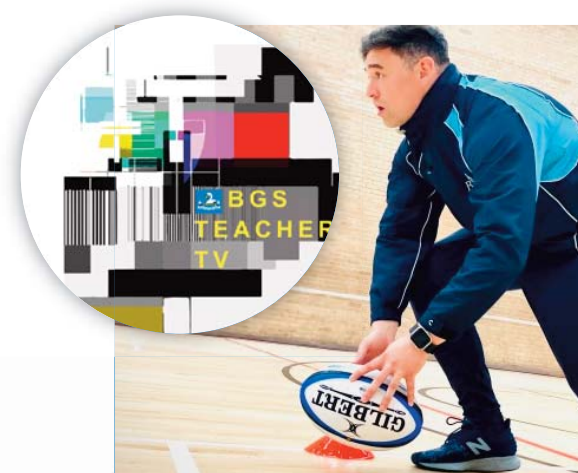
**Mrs Vicky Leaver** - Director of Academic Provision

We encourage our pupils to aim high and support them in doing so. We have developed specialised programmes that run across from Year 11 to Year 13 for students intending to apply for study at Oxford or Cambridge as well as for those aspiring to study Medicine, Dentistry or Veterinary Sciences.

Our programmes aim to broaden the horizon of our students as they explore the nature of an Oxbridge education or life as a Medicine, Dentistry or Veterinary Sciences student. Participation on these programmes enable our students to ensure they choose the correct courses for both their area of academic interest and prospective careers. The support offered provides them with the academic and intellectual stretch to prepare them for both the admissions process and the challenge of undergraduate study on some of the most demanding courses in the United Kingdom.

## BGS TEACHER TV

Our very own, in-house, BGS Teacher TV provides online learning: skill-based lessons exclusively for our pupils, taught by the very teachers they already have a rapport with. This enables pupils and staff to work and collaborate in order to strengthen academic provisions using specialist knowledge. Filming is a rolling continuum throughout the academic year so we are always prepared for remote lessons. Pupils can find all these resources on their SharePoint site.





# CONTINUITY OF PASTORAL CARE

**At Bury Grammar School we know how important pastoral care is – children and young people thrive when they feel happy and secure.**

Good pastoral care helps prepare girls and boys for the future, empowers them to make the best and brave decisions, and instils confidence, resilience and wellbeing as well as acceptance, understanding and tolerance of difference.

Pupils are invited to weekly drop-in sessions with Heads of Year to provide additional academic support, advice and encouragement.



Our experienced team of form tutors will ensure continuity of pastoral care to all pupils during remote learning.

Our remote pastoral care includes:

- Online assemblies
- Online form time discussions
- Academic intervention
- Welfare provision
- Positive Mental Health support
- Mental Health Ambassador Programme
- House competitions
- Mentoring
- Health Support Workers
- Leadership opportunities

“The school day begins at 8.45am for pupils in the Senior School and Sixth Form when they meet their form tutors for registration and to participate in the pastoral programme of assemblies and activities. Whole school assemblies, led by the Head or a senior member of staff, take place at the beginning of the week and these are supplemented by Year Group and House assemblies.

Form tutors will lead various activities ranging from quizzes to debates, often with focus on physical and mental wellbeing. The pastoral teams are focusing on providing academic and welfare support to all pupils. Heads of Year are monitoring our pupils' engagement in remote learning and will offer guidance and support to anyone who is encountering difficulties with their academic work.

In these unusual and difficult times, the wellbeing of pupils is of paramount importance. The Senior Health Support Workers and Heads of Year will aim to contact all pupils for a welfare check-in.”

**Mr Rob Lees**



# EXTRA CURRICULAR REMOTE PROVISION

**We want our pupils to develop broad interests, to be outward-looking and culturally aware.**

In school we provide a wide range of extra curricular opportunities that compliment our academic offering and we have tailored this slightly to ensure we continue to provide these opportunities to all pupils in times of remote learning. We feel that it's important to keep this aspect of pupils' education going so that pupils don't lose the momentum of learning new skills and interests.

**Well over a hundred different extra curricular activities continue to take place remotely**

BOOK CLUB  
CLUB D'ITALIANO  
DIGITAL ART  
BUSINESS VIRTUAL FACTORY VISITS  
GEO CLUB  
MARVEL CLUB  
SPELLING BEE  
SCIENCE DISCOVERY AWARDS  
DRAMA CLUB  
ADVANCED MATHS CLUB  
PHOTOGRAPHY CLUB  
SPORT  
EUROPEAN LITERATURE



More options available here: [www.burygrammar.com/enrichmentatbgs](http://www.burygrammar.com/enrichmentatbgs)





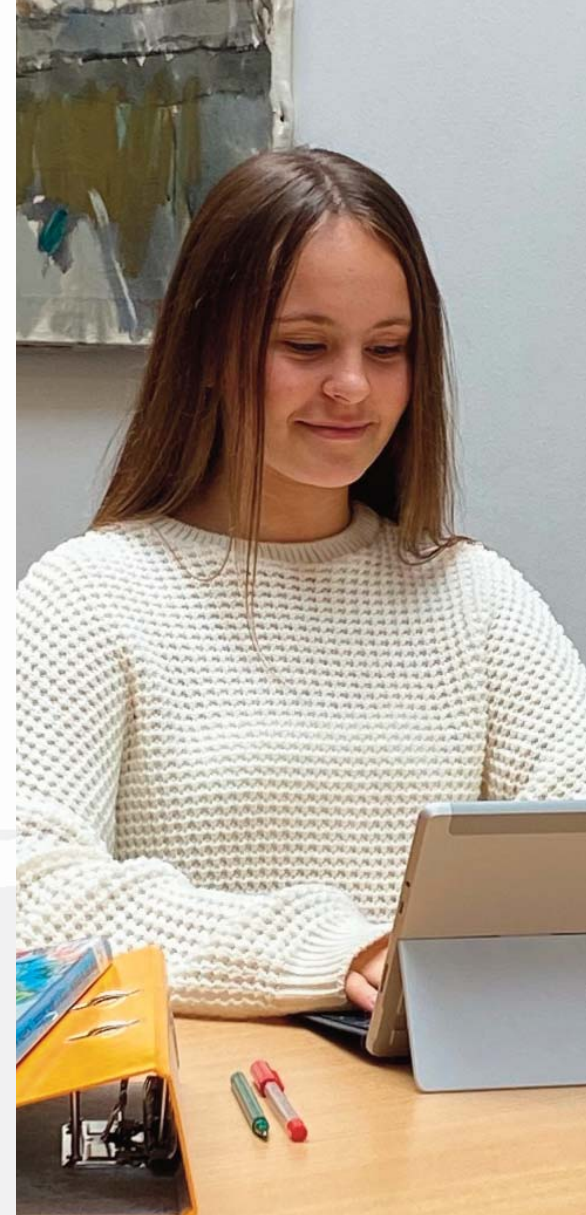
# SPORT & MUSIC

Daily exercise and keeping active are tremendously important for children during lockdown. Our PE department will set structured exercise programmes and physical challenges, and will encourage pupils to take part in daily exercise.

“During remote learning there will still be the opportunity for pupils to access interactive sport sessions each week with a member of the PE department as well as independent physical challenges that can be completed at a time that fits around daily routines. We hope that pupils will enjoy the activities on offer including interactive yoga sessions, and blasts of fitness, as well as ‘solo sessions’ for specific sports. There will be house competitions which pupils can also take part in. In these exceptional times, it really is important that our pupils are physically active which will contribute to a healthy balanced lifestyle as well as their overall physical and emotional well-being. The Sports Faculty hope that pupils share some of these activities with the rest of the family - we know that some can become quite competitive!”

**Mrs Rachel Newbold** - Director of Sport

Music is good for all of us in these challenging times and especially for children. It's for that reason that we will continue to offer a wide range of remote music provision for our pupils of all ages. This will include weekly interactive percussion and vocal activities for infants and juniors as well as live theory lessons and choir practices for seniors. In addition, all instrumental and vocal lessons will continue remotely.



# OPTIONS, CAREERS ADVICE AND UCAS

- Year 8 and Year 11 pupils are supported by tutors and senior leaders to discuss GCSE and A Level subject choices.
- Year 11 pupils join their tutor and a member of the Sixth Form team to talk through their post-GCSE options, A Level combinations and their career aspirations.
- The Unifrog online platform allows Senior School pupils of different ages to explore and research different pathways post-school, be it careers or university/ further education. Our trained staff continue to work with pupils remotely to guide them through the options available to them.
- Year 12 students use the Unifrog online platform to research university courses and prepare their UCAS personal statements.
- Pupils in Years 9, 10 and 11 use Unifrog to explore careers-related topics such as CV writing, leadership skills and how to research apprenticeships and university courses.
- All Senior School pupils are to be invited to attend careers drop-in sessions on Teams or by phone.

*“The School has done really well during the pandemic and teachers really looked after us.”*

BGS Pupil





# COMMUNICATION

## The essential collaboration and partnership between pupils, families and school.

Whether our pupils are in School or learning remotely, we pride ourselves on involving parents with every step of their son or daughter's journey through school and understand that access to information is crucial for parents. Parent involvement is integral to success.

For us, good communication is vital and we will always seek to communicate positively, honestly and openly with pupils and parents. The involvement of parents in a home-school partnership ensures maximum support is given and positive outcomes are achieved. This is a fundamental part of our school ethos. We want to work with parents to ensure our pupils achieve their potential. Our teachers are experts at leading learning and our pupils are magnificent learners, but our strong home-school partnership makes all the difference.

Bi-weekly newsletters are sent home via email and via our iSAMS BGS Parent Portal, as we understand how important it is to keep all parents and pupils updated, so that we continue with our consistent and shared approach.

As ever, the key for parents is that communication about their individual child is good; at BGS we welcome communications from parents in the way which best works for them during remote working - whether by email, phone or video calls.



## SOCIAL MEDIA

During times of remote learning the BGS community engage with us on social media, particularly Instagram (Bury Grammar School), Facebook (Bury Grammar School) and Twitter (@burygrammar) where we share positive success stories, messages of support and BGS news stories, helping to keep our community connected. This continues when pupils are in school too! Please follow and 'like' us!

## WEBSITE

Our School website offers an enormous amount of information, whether in School or at home. The virtual tour of BGS offers a great insight into our facilities. *BGS on Film* showcases our talented pupils and the many subjects on offer at BGS, and our Whole School news shares important stories about School and our community.

## PARENTS' EVENINGS

We understand the importance of keeping parents informed and involved in their pupils' progress and therefore to run parents' evenings, we turn to our remote software during periods of remote learning. This software is called 'schoolcloud' and enables video calls between teachers and parents to go ahead as planned.





# THE TEAMS BEHIND THE SCENES

At school, work carries on behind the scenes to support our pupils' remote education.



*"Thank you BGS for looking after my daughter's education in these difficult times. I am so impressed with the seamless way that you transferred to online learning. My daughter feels connected to her teachers and classmates and the extra curricular provision is very impressive!"*

Year 11 Parent

*"Our little ones' teaching has been amazing – thank you so much for all the brilliant support. Thank you to the key worker provision and those supporting our children in school."*

Infant School Parent



**We hope that you have enjoyed this taste of a BGS remote education and that you have seen that pupils' day-to-day experiences continue to be busy and fulfilling, and contain moments of joy.**

This programme is not an 'end point' for us: from here, we will continue to listen, observe, reflect, and enhance provision and continue to forge ahead.

Our pupils' futures are too important to stand still while a virus takes hold. We will not allow this to happen.

Education is all about the future. While the vast majority of Bury Grammar pupils make very good progress via remote learning, it is integral to our approach to do everything we can to ensure every pupil achieves the very best of which they are capable.

To this end, we have scheduled additional support sessions once a week in school post lockdown. We will not let anyone be left behind.

Many thanks to all teams who are resolutely focused every day on our pupils' education: teachers, support staff, admissions & marketing, admin support, catering, development, estates, finance and IT.

And very many thanks to our parents for supporting us and of course to our brilliant pupils whose school this is.

*"I was so impressed with the teachers. They were so enthusiastic and patient. They're amazing, the school has been wonderful, all the key worker staff, the teachers, the heads and I'm sure many others who have worked tirelessly behind the scenes to keep it all running like the IT Dept, grounds staff, cleaning staff and reception staff – thank you all."*

Year 3 Parent

*"A big thank you to all the fantastic teachers and people who work behind the scenes, especially the IT staff who have made remote home-schooling possible."*

Year 6 Parent

LET'S CONTINUE TO WORK TOGETHER TO ENJOY THE PRESENT WHILE LAYING ALL THE FOUNDATIONS FOR A BRIGHT FUTURE.



*A school leading from the front in its emphasis on gender equality and nurturing mutual respect*

The Good Schools Guide 2018



# BURY GRAMMAR SCHOOLS

## #BGSATHOME

Bury Grammar School

Tenterden Street

Bury, Lancashire, BL9 0HN

Tel: 0161 696 8600

Email: [admissions@burygrammar.com](mailto:admissions@burygrammar.com)



[WWW.BURYGRAMMAR.COM](http://WWW.BURYGRAMMAR.COM)

The following information is regularly updated and can be found on the school website

- Our Governors
- Inspection Reports
- Safeguarding Policy
- Academic Ethos
- Admissions
- Fees and Bursaries
- School Calendar

