



BURY
GRAMMAR SCHOOL
AGE 3-18

School Governor

Information Pack



“A positive and uplifting environment”
The Good Schools Guide

A journey of educational excellence

Bury Grammar School is a forward-thinking, vibrant and modern school for pupils aged 3 to 18 years. It is one of the leading schools in the North West of England. We are proud of our rich heritage and the tradition of academic excellence combined with exceptional pastoral care. Our aim is to offer an outstanding and unrivalled education in which pupils are inspired to work hard, aim high and achieve. The Governors and staff have a strong commitment to retaining the long-held traditions, values and ethos of Bury Grammar School, while preparing pupils for lives in an ever changing world.



We take enormous pride in our 450 year history, whilst looking to the future with confidence, openness and optimism. We are proud to be a leading academic school, which continues to offer a well-rounded education where extra-curricular, character-building and well-being provision are taken as seriously as academic provision.

Bury Grammar school is a member of HMC and GSA and it has very ambitious plans for the future. Most unusually in the independent sector, our pupil roll is growing: our Primary School is flourishing and both Senior Schools recently moved from three to five-form entry. Our vibrant Sixth Form is about to be enhanced by further accommodation. Our excellent results improve year on year, adding to the School's noteworthy reputation within Bury and Greater Manchester, and in 2020 the School celebrated its 450th birthday.

This is the perfect moment to join the Bury Grammar School Governing Body.



The Bury Grammar School Ethos

Bury Grammar School is a leading UK school and one of the oldest schools in the country. We are a warm, welcoming and forward-looking school which focusses on quality, tradition and innovation.

The school of first choice for pupils, parents and staff in the area, we view Bury Grammar School's history with pride and its future with optimism.



Bury Grammar School's Pupil Aims

Scholarship

To challenge and inspire pupils to work hard, aim high, achieve and celebrate academic success

Character

To foster generosity of spirit, open-mindedness, confidence, resilience and a sense of service

Enrichment

To encourage all pupils to participate in a wide range of extra-curricular activities, developing an all-round approach to their education and a lifelong love of learning

Partnerships

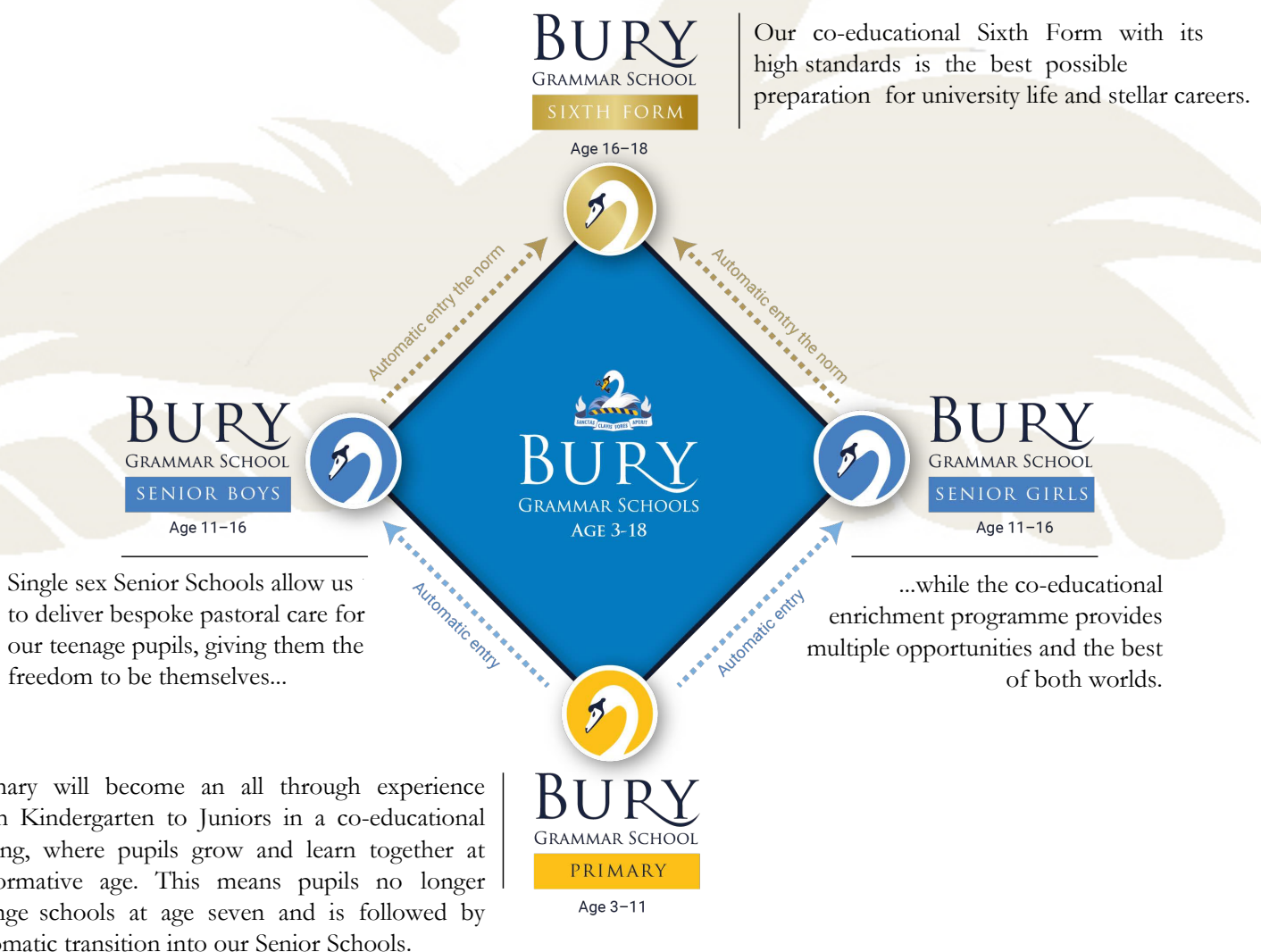
To work harmoniously with others and seek to have a positive impact on society

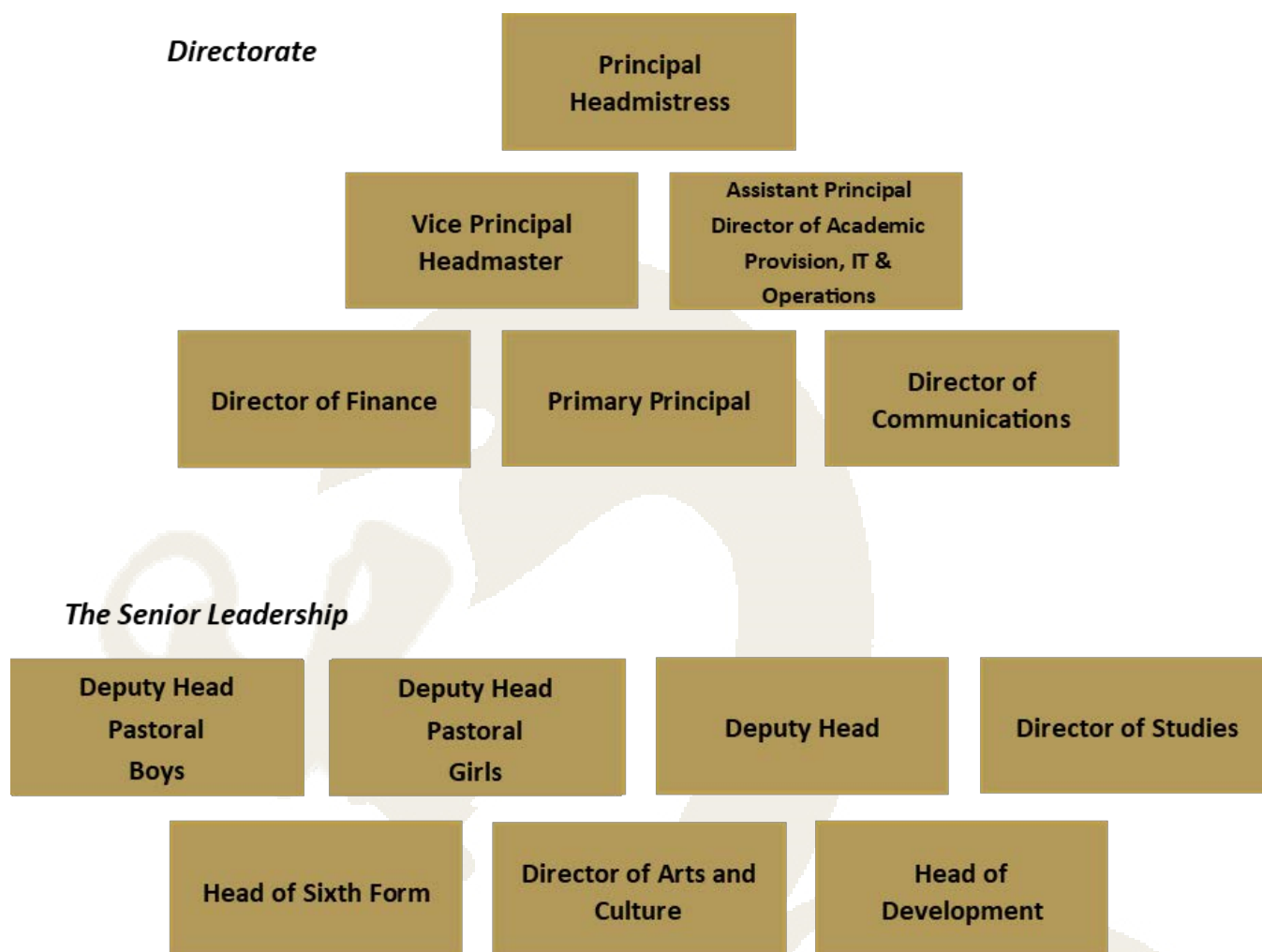
Diamond model school

Bury Grammar School is a 'diamond model' school which means that it combines both single-sex and co-educational teaching in the same organisation. Our diamond structure allows us to offer the very best educational setting to pupils at each stage of their lives, so that their journey through the Bury Grammar School is a happy, productive and successful one.

The youngest children are taught in co-educational teaching groups in the purpose-built Primary Division from Kindergarten through to Year 6. Pupils are then taught in single-sex teaching groups from Year 7, which continues until the pupils complete their GCSEs. After GCSEs in Year 11, pupils progress into the purpose-built co-educational Sixth Form for their A Level study as students in Years 12 and 13.

We believe that our model provides the 'best of both worlds' within our family of schools. Pupils are able to mix socially outside of lessons and extra-curricular activities are mixed.





A collaborative ethos, the absolute commitment of every leader to the whole school and an unwavering focus on what is best for the pupils and Sixth Form students is what makes this School so successful. The leaders are supported by a talented group of Governors.

The School operates as one staff and there is a unique leadership structure in which the Principal is also the Headmistress, whilst the Vice Principal is the Headmaster. The Deputy Principal (Director of Academic Provision, IT and Operations) ensures the highest academic standards are met, the Director of Finance oversees the School's finances and estate, the Principal of the Bury Grammar Primary Schools directs the work of the Kindergarten, Infants and Juniors and the Director of Communications oversees admissions, marketing and whole school administration. These six colleagues make up the Directorate.

On the SLT there are two Deputy Heads (Pastoral) in the Senior Schools who are Designated Safeguarding Leads and oversee welfare and pastoral care in each school. The day-to-day running of the School is overseen by the Deputy Head (Operations) who also supports the vital and valued extra-curricular programme of the school.

Introducing the Governing Body



The Governors of Bury Grammar School work strategically and collaboratively with the staff, pupils, students, parents and community of this outstanding School. We are committed to ensuring that the pupils and students receive an excellent education, which will enable them to be ambitious, confident, tolerant, respectful and well-rounded young people, extremely well-prepared to meet life's future challenges.

Structure of the Governing Body

At Bury Grammar, we believe that an effective Governing Body is always a diverse board, where people with a range of skills and backgrounds work together. It is a place where no one group is over-represented nor one voice dominates the debate. Therefore, this School's Governing Body consists of people who possess a broad span of experience and skills. They are dedicated to setting the strategic direction of the School and maintaining the School's high reputation.

If you have the time to commit to the Governance of the School, you will find it a most enjoyable and fulfilling experience.

The School has between twelve and fifteen Governors, each of whom is appointed initially for a term of four years. AGBIS (the Association of Governing Bodies of Independent Schools) advises that there should not be too high a proportion of Governors with direct affiliations to the School, and that the number of parents and alumni should not represent greater than one third of the Board. At the moment, that quota is filled.

The Full Governing Body usually meets four times a year, with most Governors serving on one other Committee. Each of these Sub-Committees also meets three to four times per year. There are currently five Sub-Committees of the Governing Body:

- Finance & Resources
- Education
- Governance
- Remuneration
- Joint Consultative Committee

Governance at Bury Grammar School is about more than having a focus on strategy, finance and fiduciary duties: it is a creative partnership, where members of the Governing Body have a clear vision, strong values and are mindful of the importance of tradition, whilst being guardians of a sustainable business.



...more members for our Governing Body

Bury Grammar School is currently seeking additional Governors to bring new skills to the Governing Body. This is an opportunity to join the Governing Body at an exciting time, where pupil numbers continue to grow and the school continues to be a leading school in the North West of England.

Bury Grammar School is a charity and company limited by guarantee, hence Governors of the School are also Trustees of the charity and Directors of the company.

The main duties and responsibilities of a Bury Grammar School Governor are to:

- Determine the overall strategic direction and development of the School through good governance and clear strategic planning.
- Know and support the aims of the School and ensure that these are achieved.
- Attend Board meetings, Committee meetings and any other Governor events and training.
- Maintain sound financial management of the School's resources, ensuring expenditure is in line with its objectives and investment activities meet accepted standards and policies.
- Ensure that the School and its representatives function within the legal and regulatory framework of the sector and in line with the School's governing remit.
- Provide support and challenge for the Principal and senior leaders.
- Promote and develop the School in order for it to grow and maintain its relevance in society.
- Attend and provide support at whole school activities and events, including carrying out visits to the School throughout the academic year.
- Maintain absolute confidentiality about all sensitive/confidential information received in the course of the Governors' responsibilities to the School, and in accordance with the Conflicts of Interest Policy.

There are approximately 8-10 meetings per year for a Governor to attend. Meeting dates are diarised well in advance and there will be opportunities for some virtual attendance when required.



We would be delighted to hear from anyone who has:

- The commitment and time to attend and carry out this role
- An interest in education and the future of the School
- A commitment to the School's aims: Scholarship, Character, Enrichment and Partnerships
- A commitment to promoting academic excellence and exceptional pastoral care
- A commitment to equality, diversity and inclusion
- A commitment to all aspects of educational compliance
- The ability to work well with others
- The ability to communicate effectively, to express ideas clearly and listen to others, challenge and support

If you have skills or experience in any of the following areas, we would be particularly interested to hear from you:

- Education: EYFS (Early Years) - KS5 (Sixth Form) or Higher Education
- Environmental Impact/Societal Impact
- Legal
- Finance
- Sales/Marketing/PR/Fundraising
- Buildings/Estate Management
- Health and Safety
- Strategic Leadership and Planning
- IT

The above is not an exhaustive list and we would welcome expressions of interest from anyone who feels they have an interest in the education of young people, as well as the relevant attributes and experience to fulfil the duties required of the Governing Body.



Expressions of Interest



If you would like to express your interest in becoming a Governor at Bury Grammar School, applications can be made by submission of a CV and covering letter addressed to the Chair of Governors, Mrs Gillian Winter. Your covering letter should not exceed 2 sides of A4 and should explain how you believe your skills, knowledge and experience would support the duties and responsibilities of a Bury Grammar School Governor.

AGBIS (the Association of Governing Bodies of Independent Schools) advises that there should not be too high a proportion of Governors with direct affiliations to the School, and that the number of parents and alumni should not represent greater than one third of the Board. At the moment, that quota is filled.

We do have vacancies on our Governing Body now. We also know that vacancies will occur in the future and not all expressions of interest will necessarily be taken up immediately. However, with your permission, we would like to keep your application on file for when a vacancy arises.

When appointing new Governors, the Board will have regard to its current profile and any skills requirement identified at the time. The Chair will contact any prospective Governor whose skills meet the vacancies at any one time.

Letters of interest should be sent to the Clerk to Governors at the following address, or electronically to: governorvacancies@burygrammar.com

**Bury Grammar School
Bridge Road
Bury
BL9 0HH**

www.burygrammar.com

Thank you for your interest in becoming a Governor at Bury Grammar School.

